



**Barcelona
Supercomputing
Center**
Centro Nacional de Supercomputación



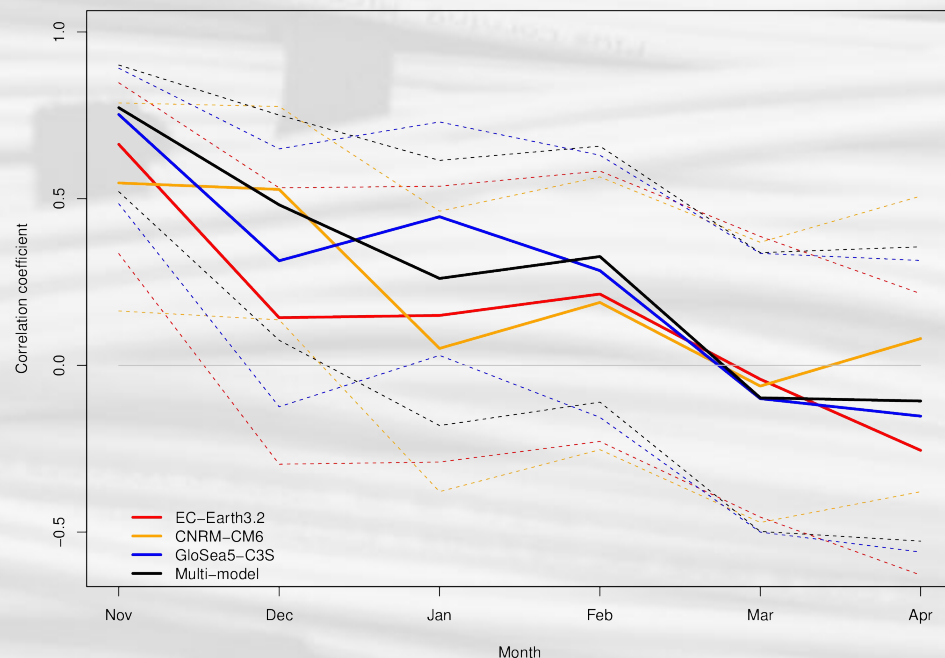
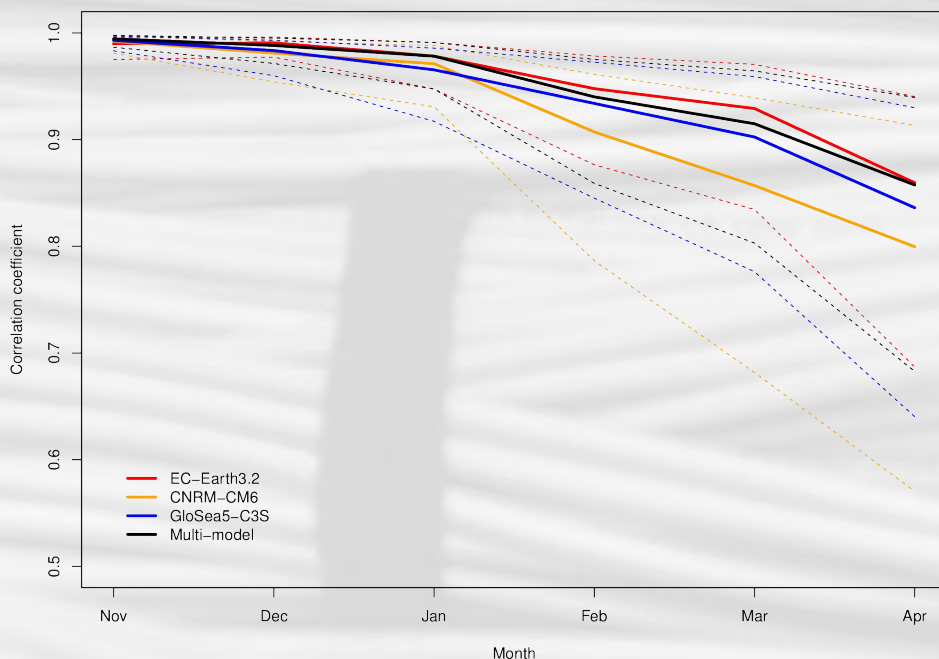
APPLICATE GA WP5 BOG session

BSC, 1/2019

Acosta Navarro, Ortega, Torralba, Massonnet,
Bellprat, Smith, Batté, Doblas-Reyes

Skill in NINO3.4 and NAO monthly indices

Nov forecasts 1993-2014 (vs. ERA-Int)



NAOI (following the definition by Stephenson et al., 2006)

DJF Anomaly correlation coefficient

EC-Earth3.2: 0.24 (0.30 EOF) - 25 members

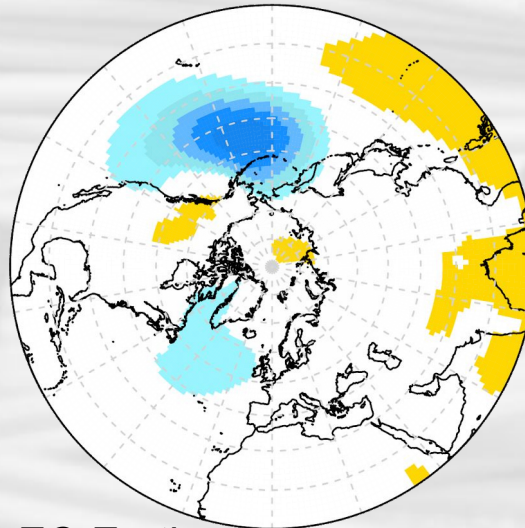
CNRM-CM6: **0.46*** (0.48* EOF) - 25 members

GloSea5: **0.49*** (0.42* EOF) - 14 members

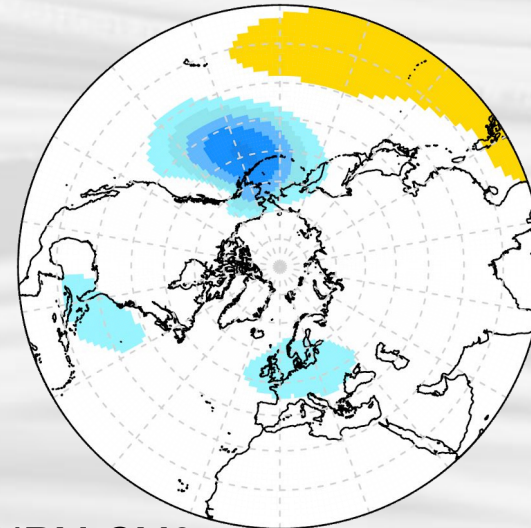
Multi-model: **0.56*** (0.56* EOF) - 64 members

Sea level pressure regressed onto NINO3.4

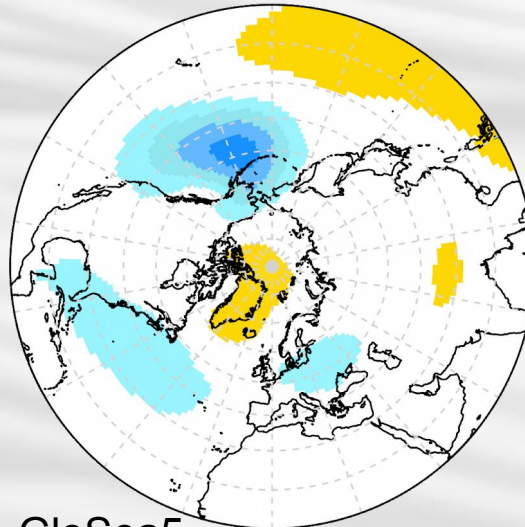
Nov forecasts 1993-2014 (in each system)



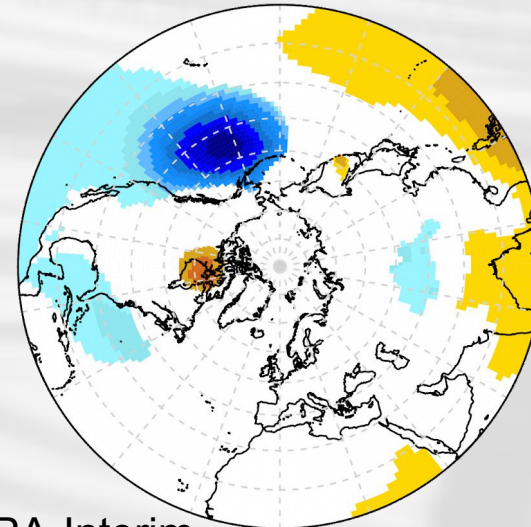
EC-Earth



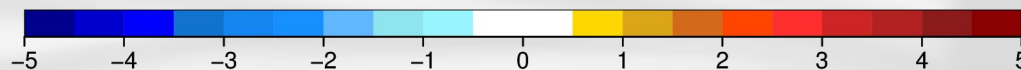
CNRM-CM6



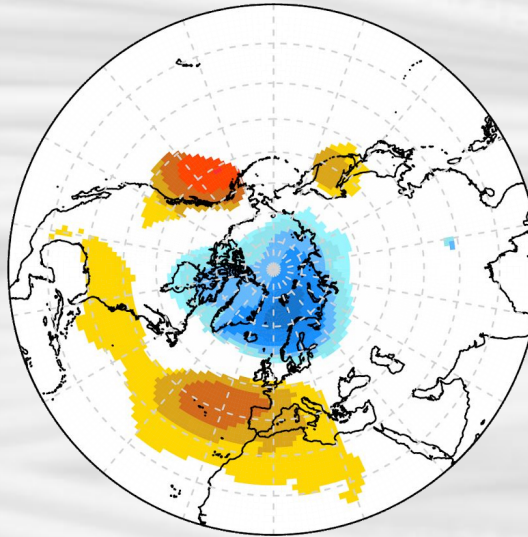
GloSea5



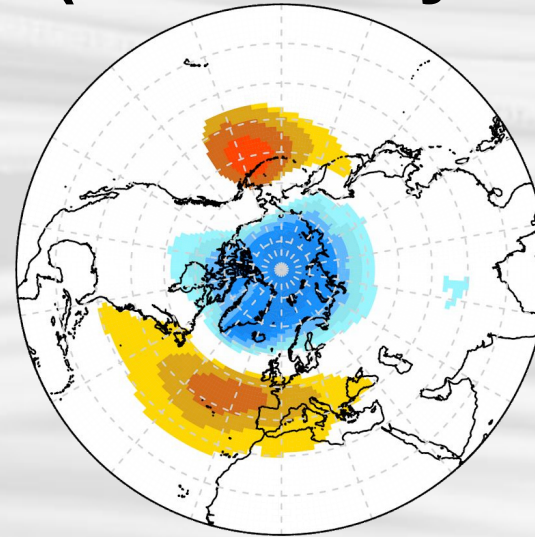
ERA-Interim



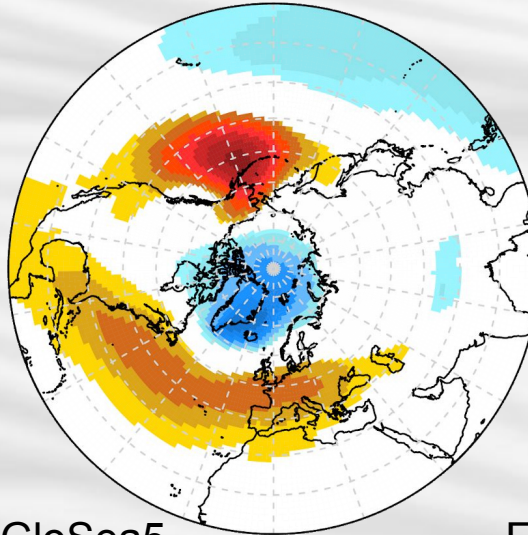
Sea level pressure regressed onto NAOI Nov forecasts 1993-2014 (in each system)



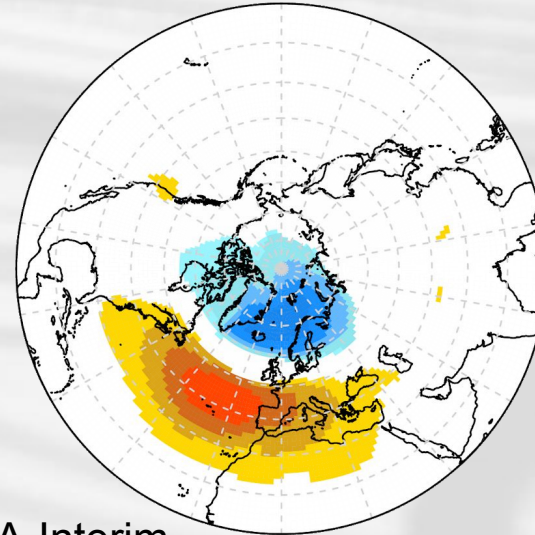
EC-Earth



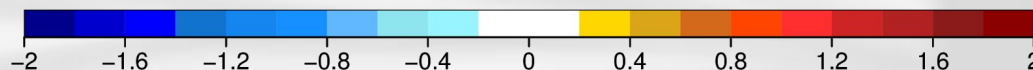
CNRM-CM6



GloSea5

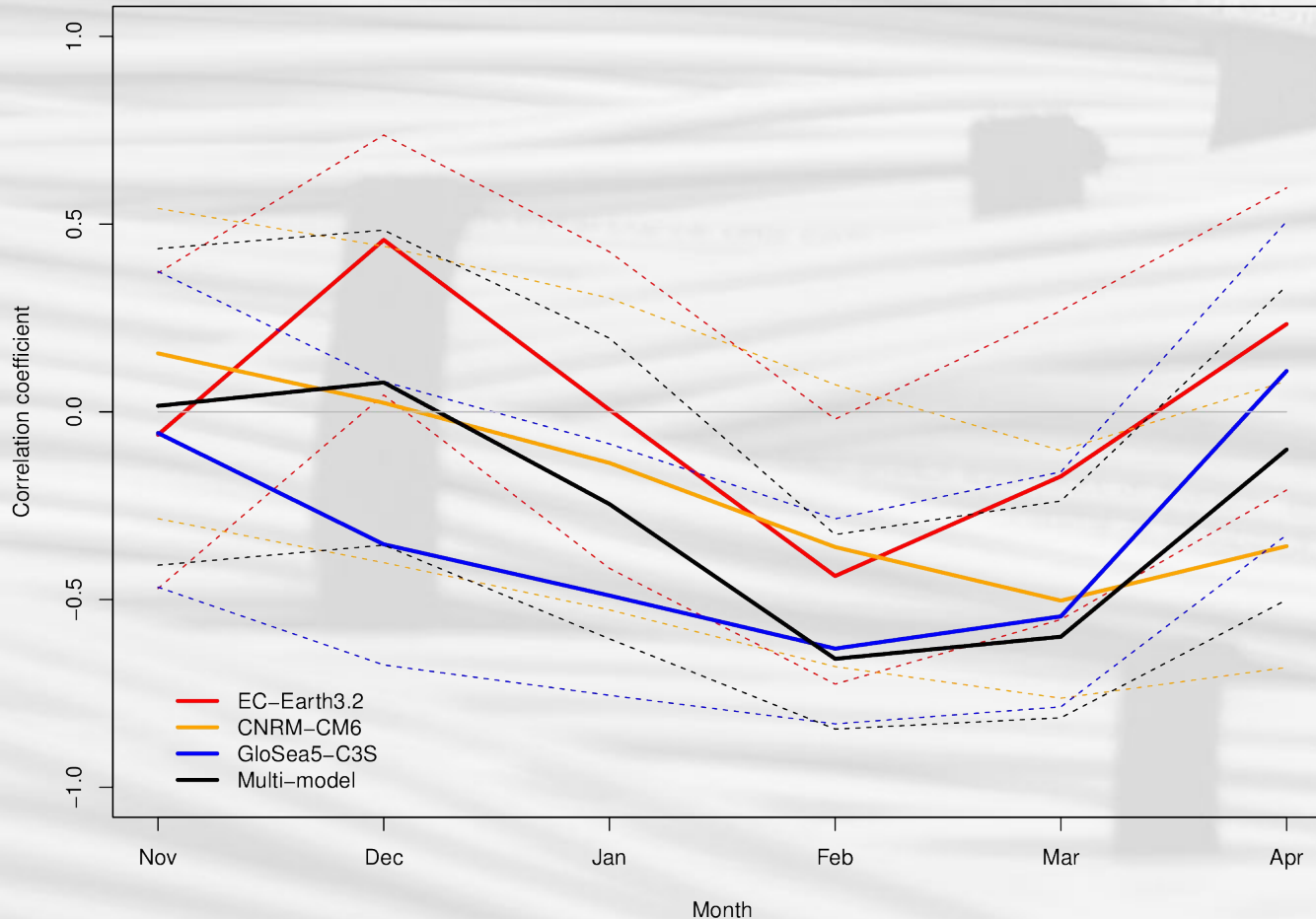


ERA-Interim



Monthly NINO3.4 and NAO correlation

Nov forecasts 1993-2014



Mean DJF ACC

EC-Earth3.2: 0.03

CNRM-CM6: -0.18

GloSea5: **-0.65***

Multi-model: -0.35

ERA-Interim: -0.22

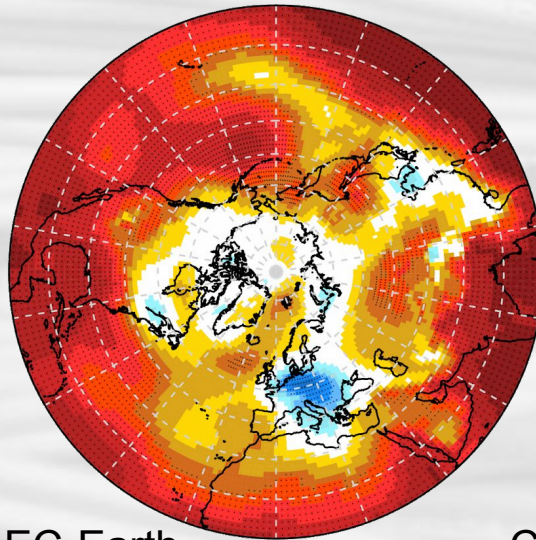
For the period

1951-2011

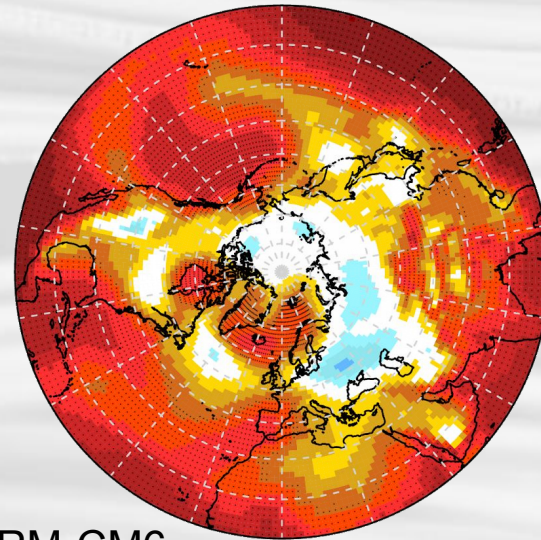
Zhang et al. (2018)

reported R = -0.23

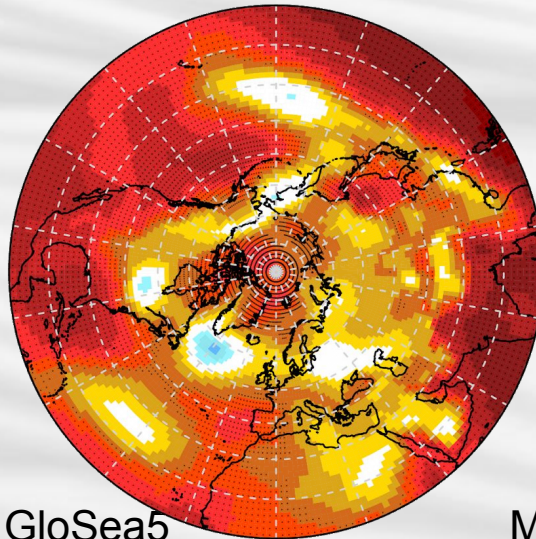
Mean DJF sea level pressure ACC Nov forecasts 1993-2014 (vs. ERA-Int)



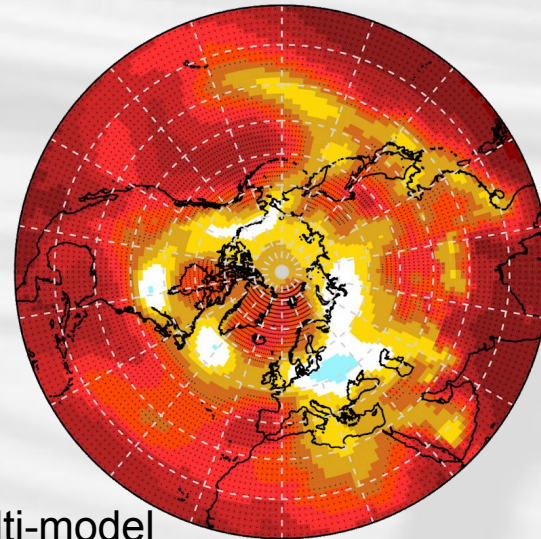
EC-Earth



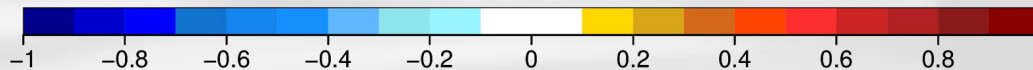
CNRM-CM6



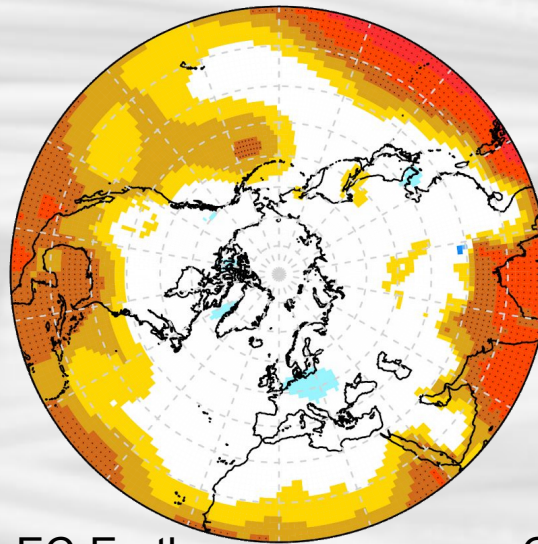
GloSea5



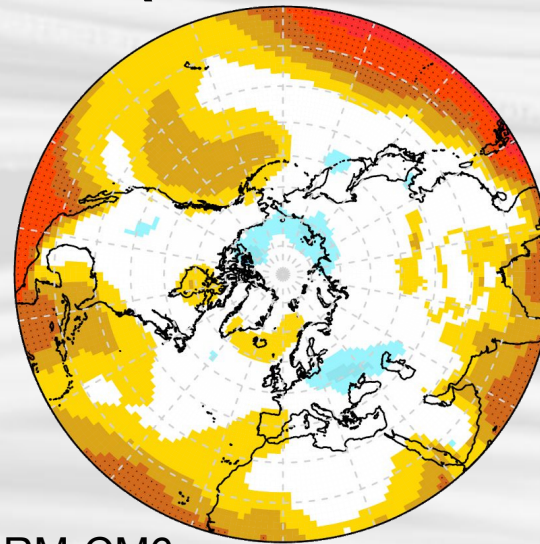
Multi-model



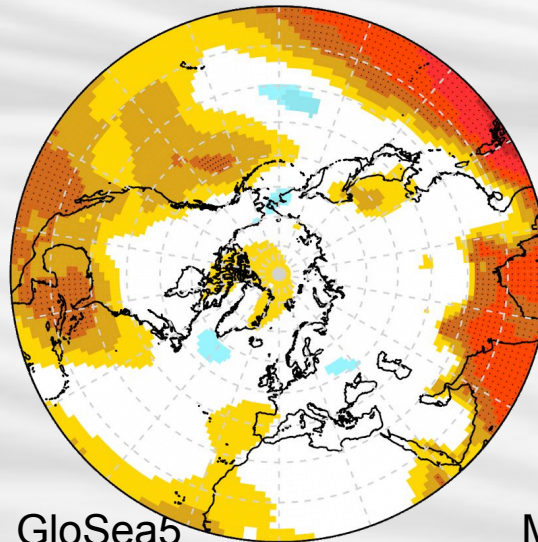
Mean DJF SLP RMSSS (RPC-corrected) Nov forecasts 1993-2014 (vs. ERA-Int)



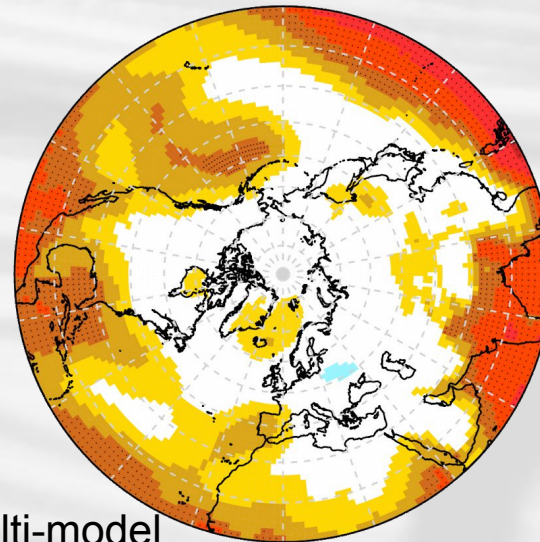
EC-Earth



CNRM-CM6



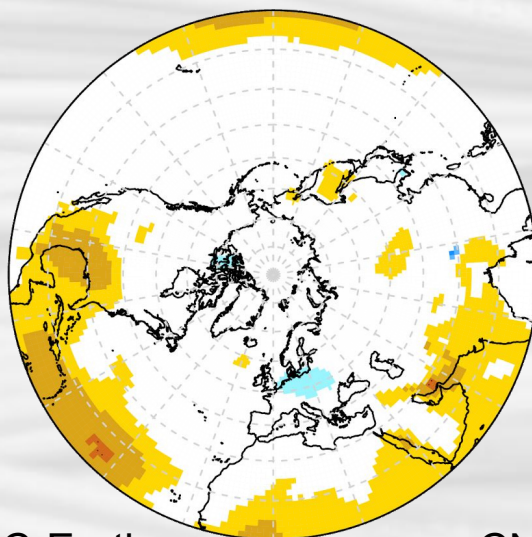
GloSea5



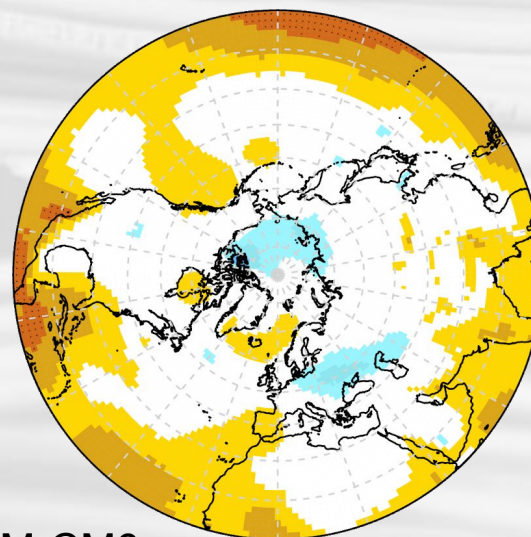
Multi-model



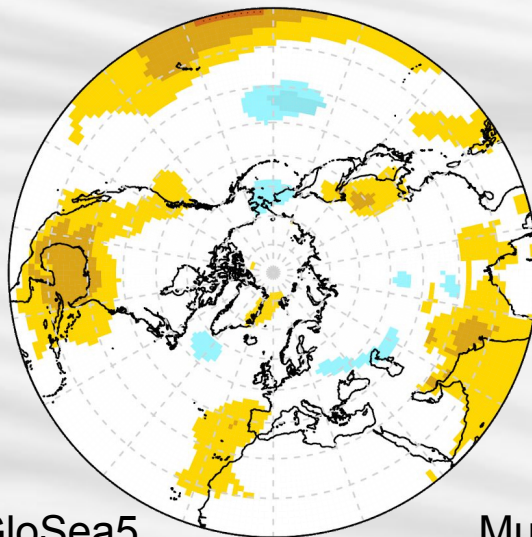
DJF sea level pressure RMSSS without NINO Nov forecasts 1993-2014 (vs. ERA-Int)



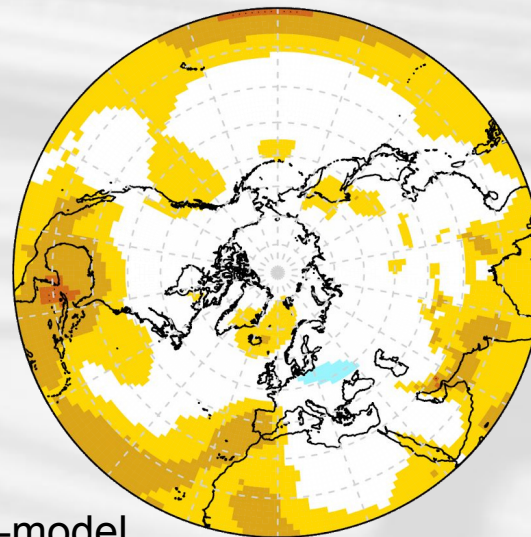
EC-Earth



CNRM-CM6



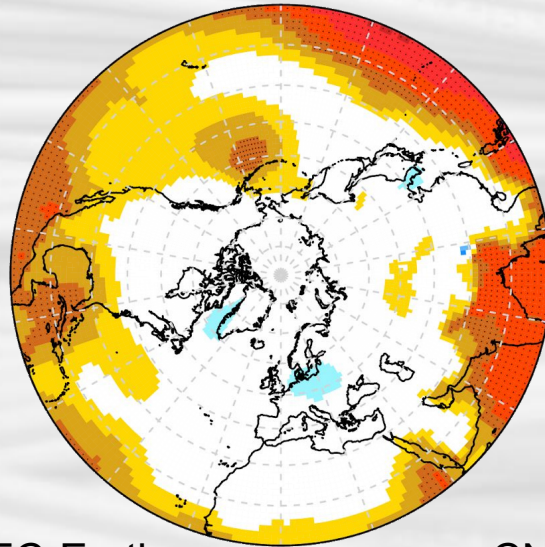
GloSea5



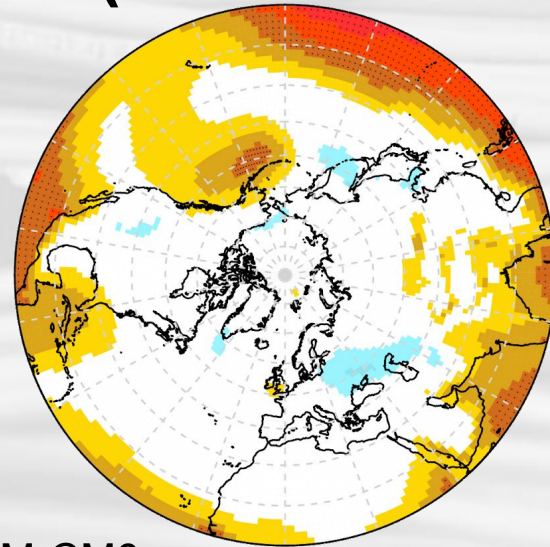
Multi-model



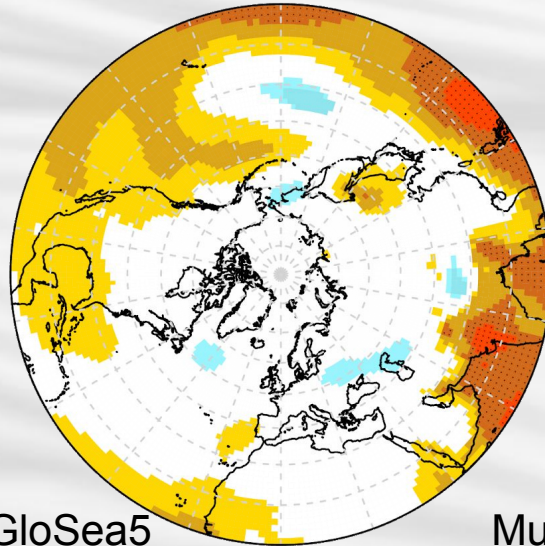
DJF sea level pressure RMSSS without NAO Nov forecasts 1993-2014 (vs. ERA-Int)



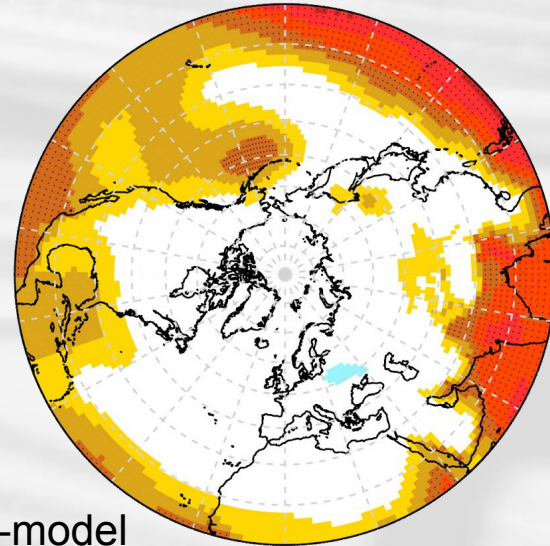
EC-Earth



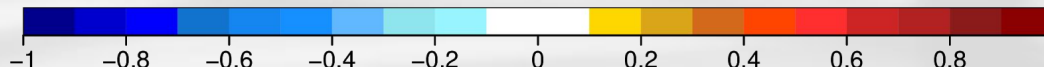
CNRM-CM6



GloSea5



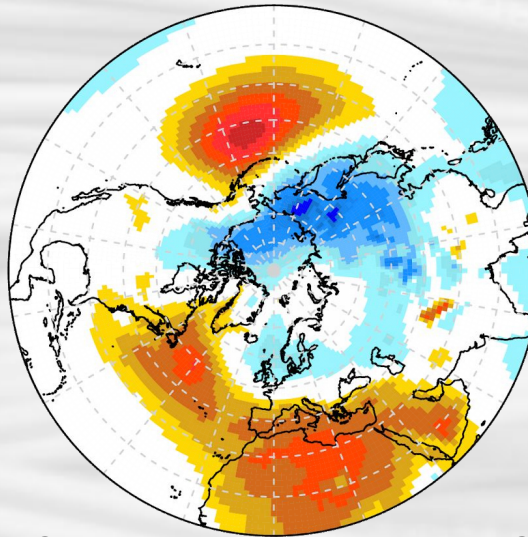
Multi-model



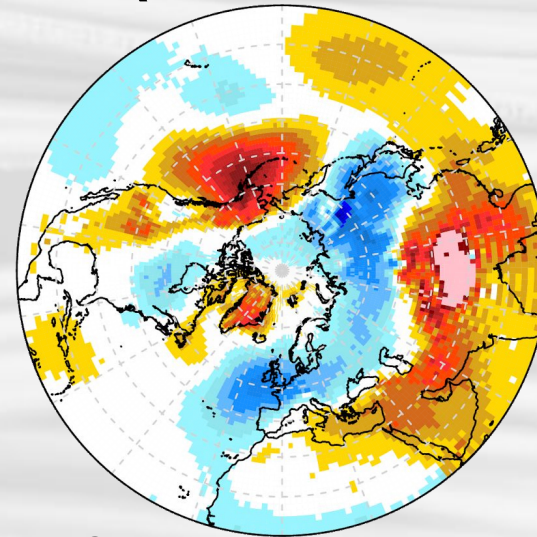
Preliminary conclusions

- ENSO and NAO are significantly anti-correlated in GloSea5 and not in the other systems.
- ENSO is the largest source of predictability for slp, tas and precip. Models agree on this.
- NAO is an important source of predictability for surface temperature over Eurasia and northern Africa. Models don't agree that well.
- NAO barely affects precipitation predictability and there is model disagreement.
- Some differences in ENSO teleconnection to North Atlantic between models. This can affect NAO skill in each system.

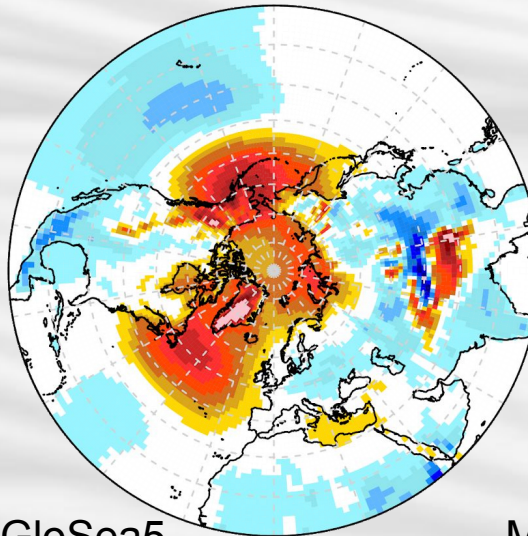
Mean DJF sea level pressure bias (Pa) Nov forecasts 1993-2014 (vs. ERA-Int)



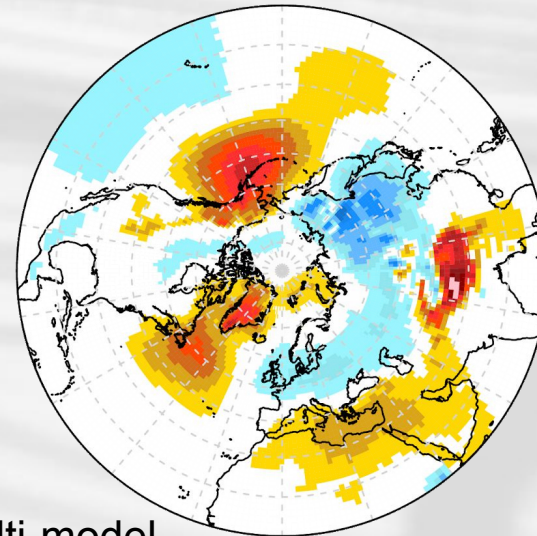
EC-Earth



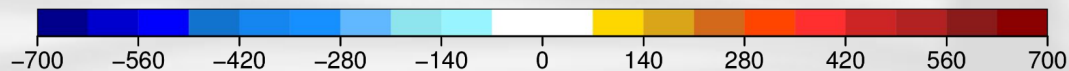
CNRM-CM6



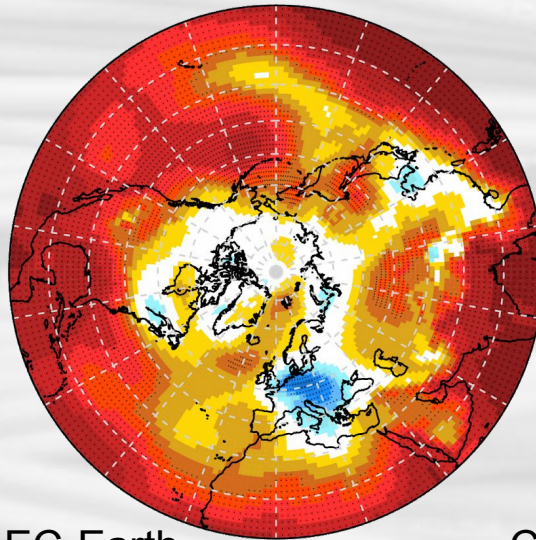
GloSea5



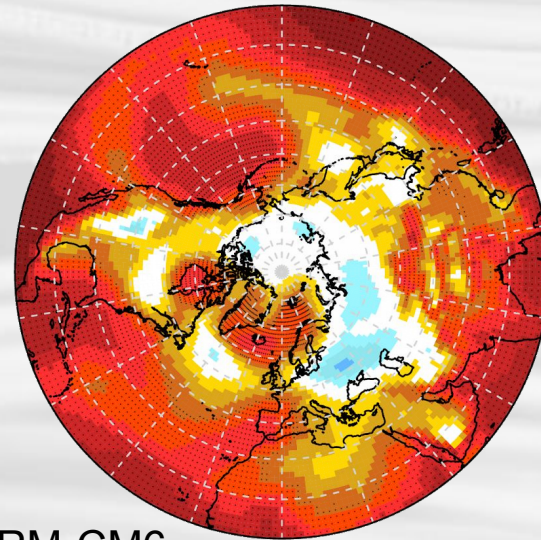
Multi-model



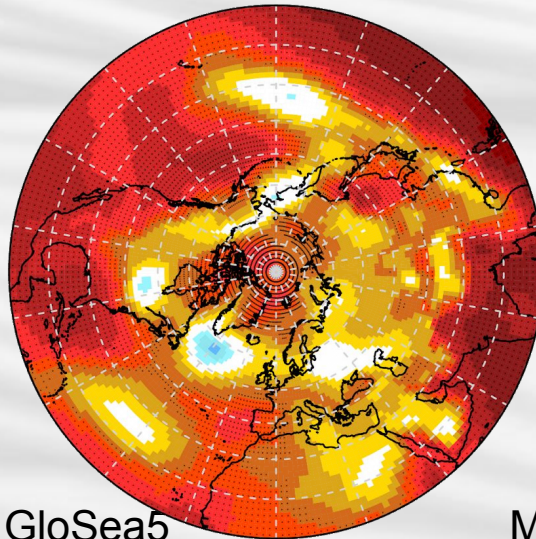
Mean DJF sea level pressure ACC Nov forecasts 1993-2014 (vs. ERA-Int)



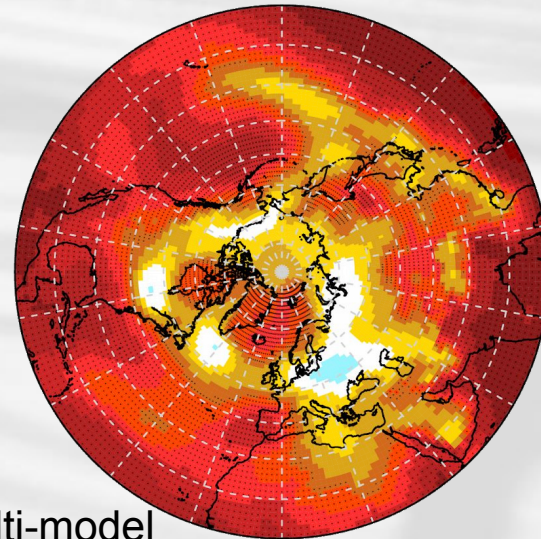
EC-Earth



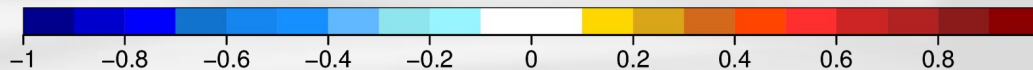
CNRM-CM6



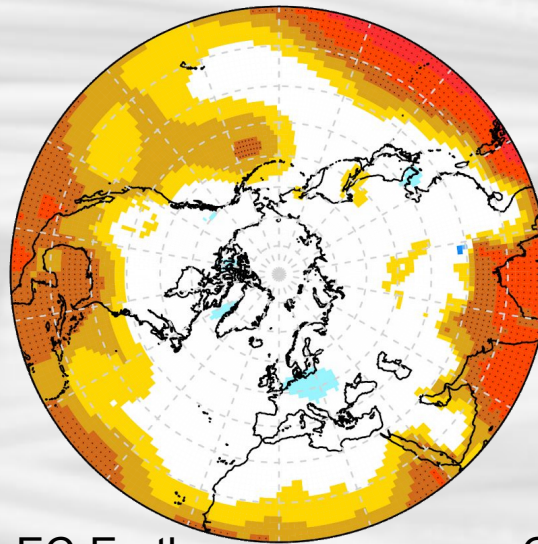
GloSea5



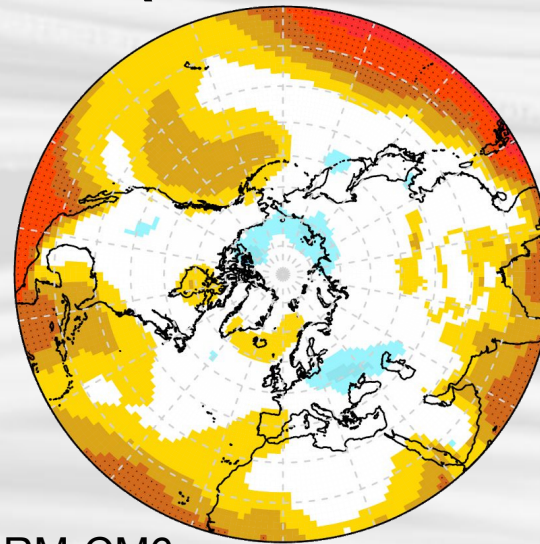
Multi-model



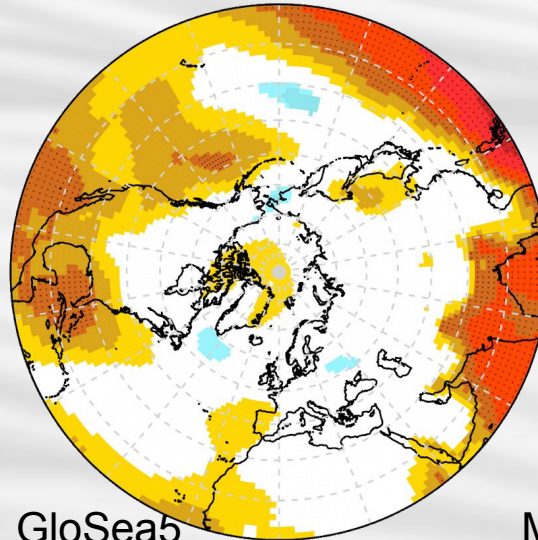
Mean DJF SPL RMSSS (RPC-corrected) Nov forecasts 1993-2014 (vs. ERA-Int)



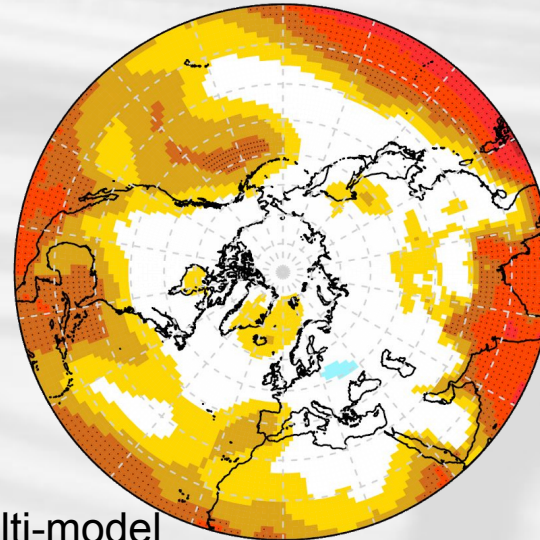
EC-Earth



CNRM-CM6



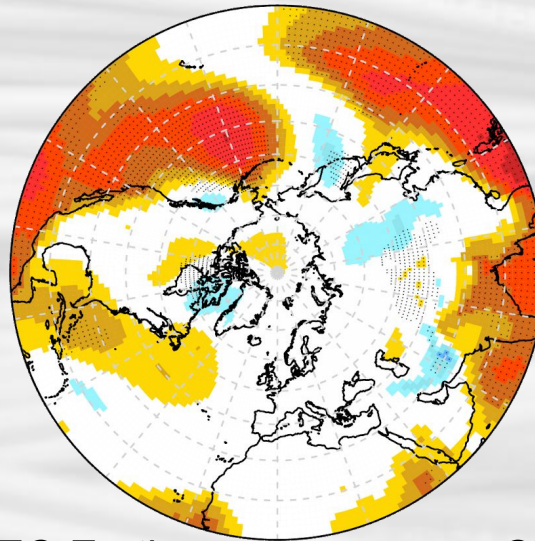
GloSea5



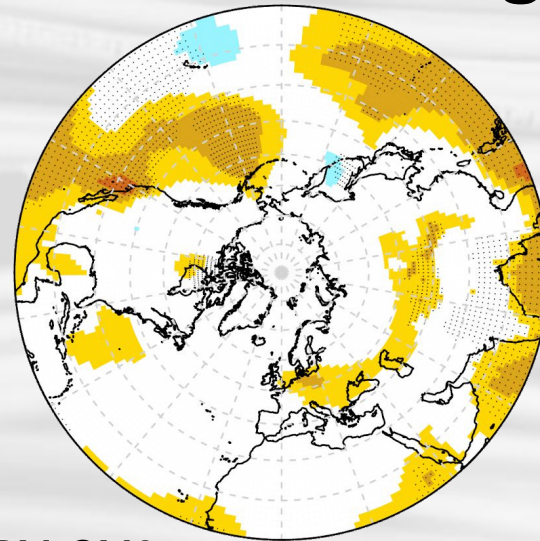
Multi-model



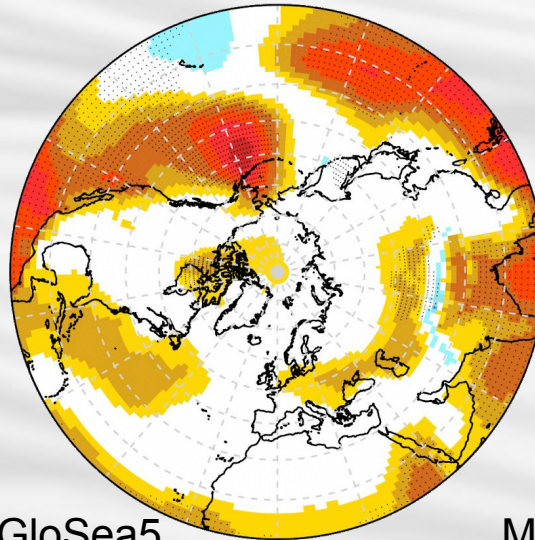
Mean DJF sea level pressure ACC difference in forecasts with and without NINO signal



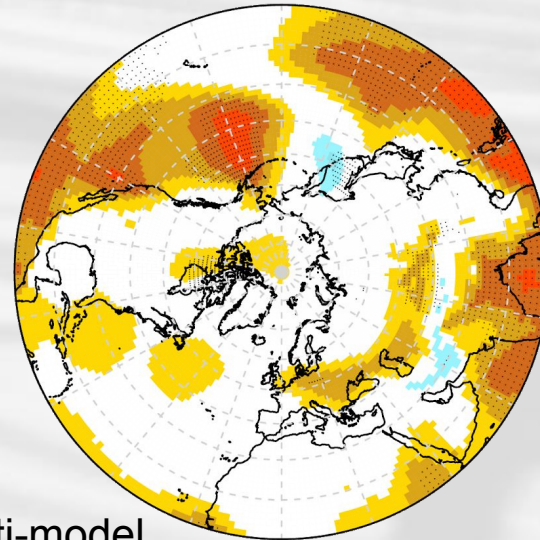
EC-Earth



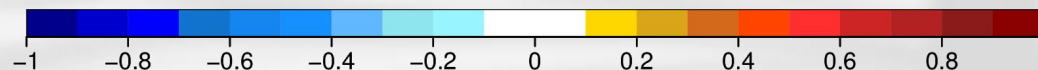
CNRM-CM6



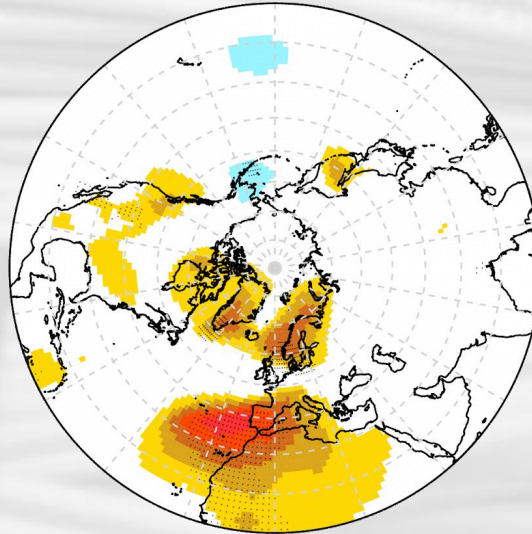
GloSea5



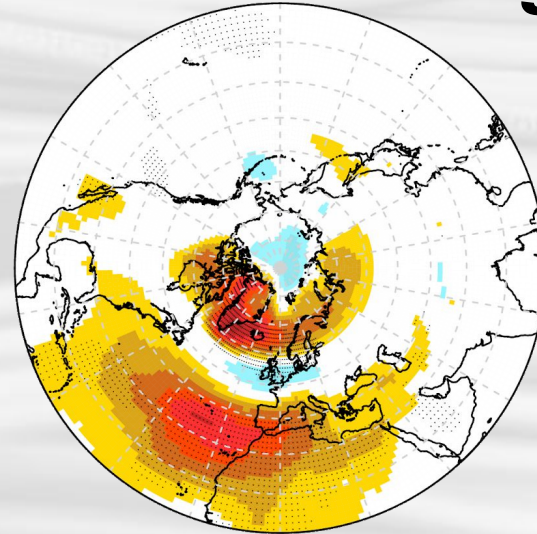
Multi-model



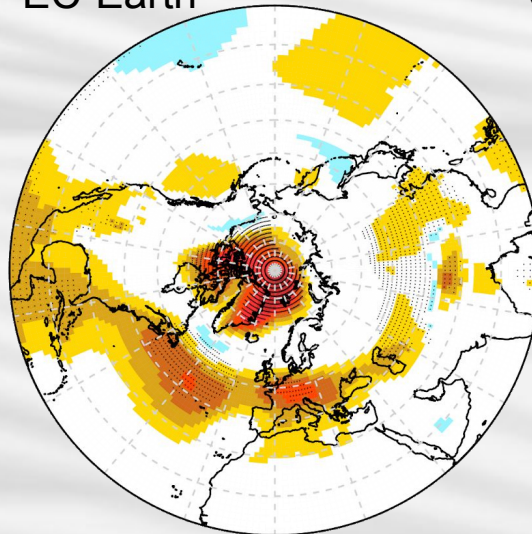
Mean DJF sea level pressure ACC difference in forecasts with and without NAO signal



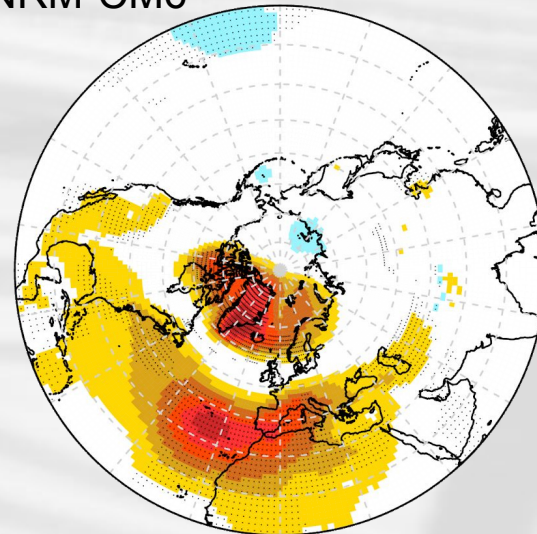
EC-Earth



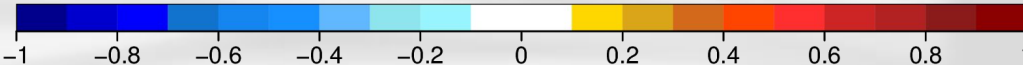
CNRM-CM6



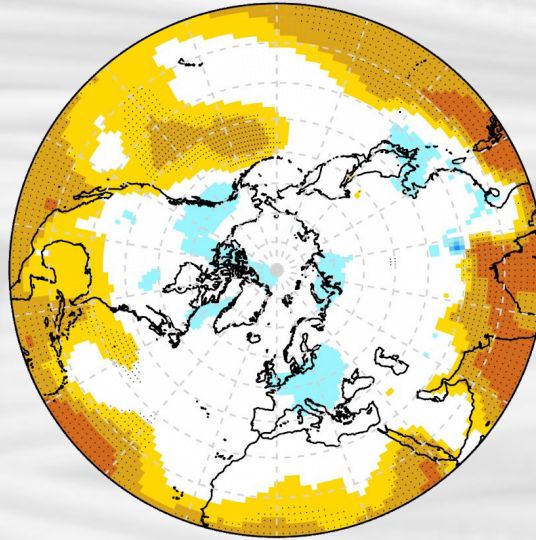
GloSea5



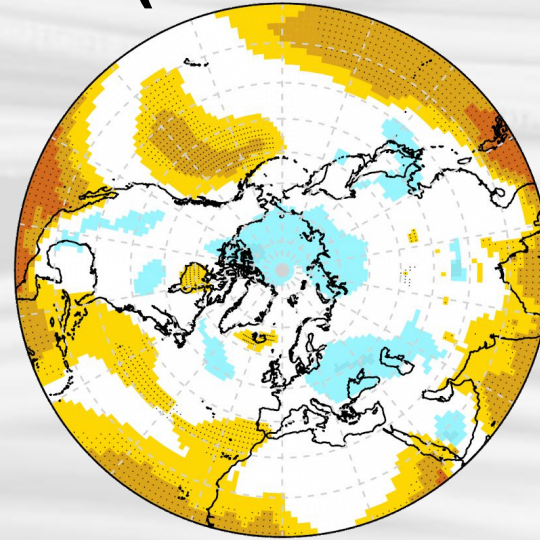
Multi-model



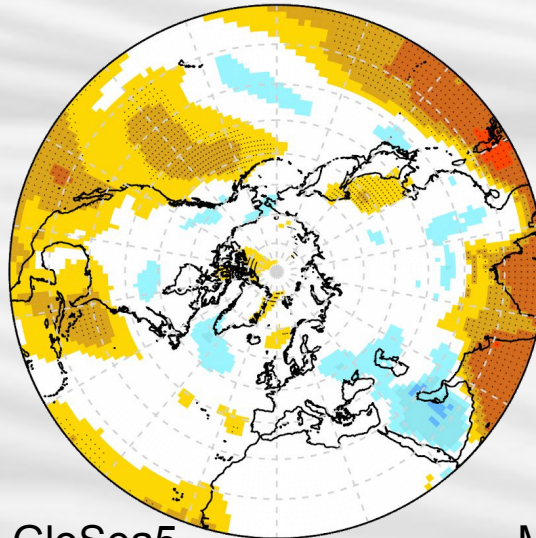
Mean DJF SPL FRCPSS (RPC-corrected) Nov forecasts 1993-2014 (vs. ERA-Int)



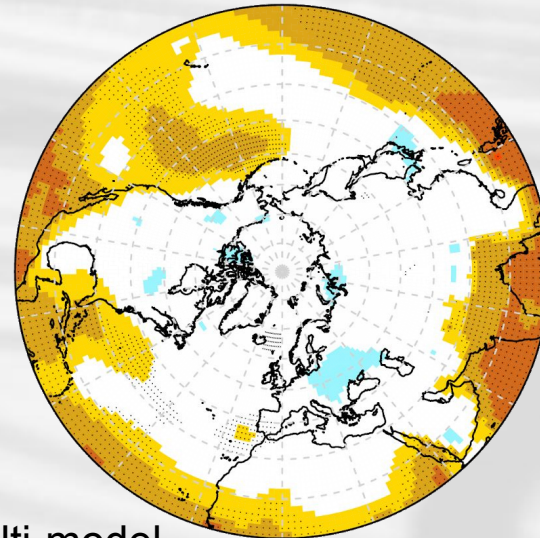
EC-Earth



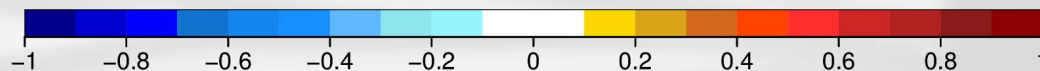
CNRM-CM6



GloSea5

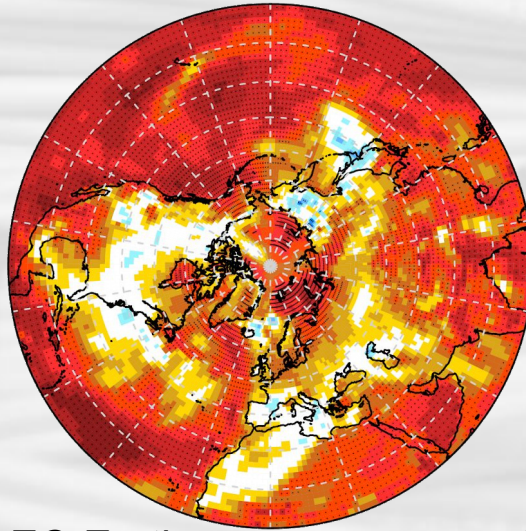


Multi-model

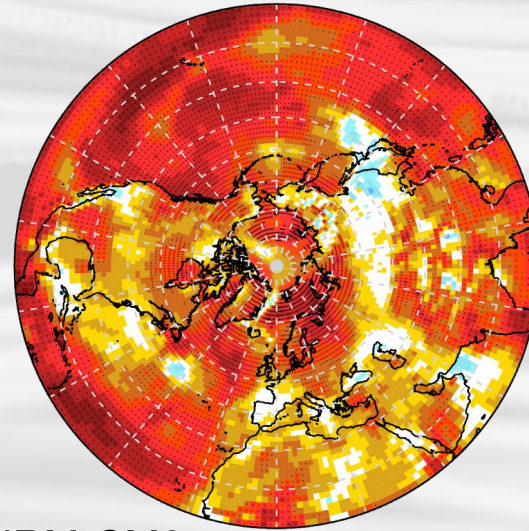


Mean surface temperature ACC

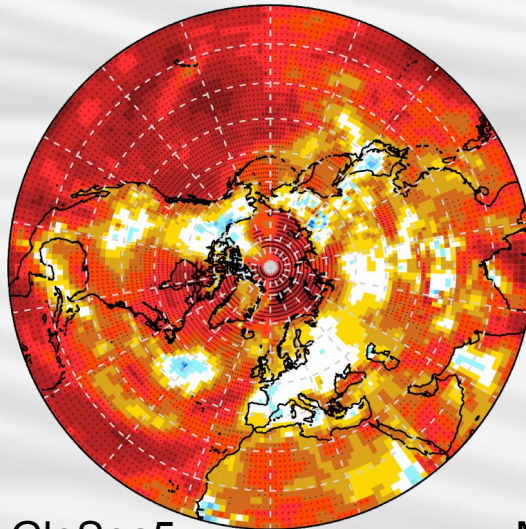
Nov forecasts 1993-2014 (vs. ERA-Int)



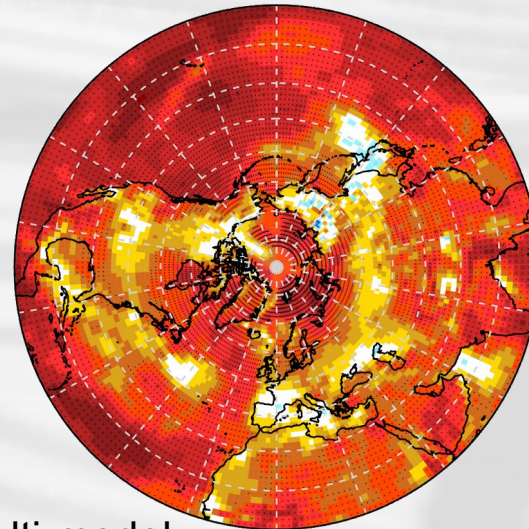
EC-Earth



CNRM-CM6



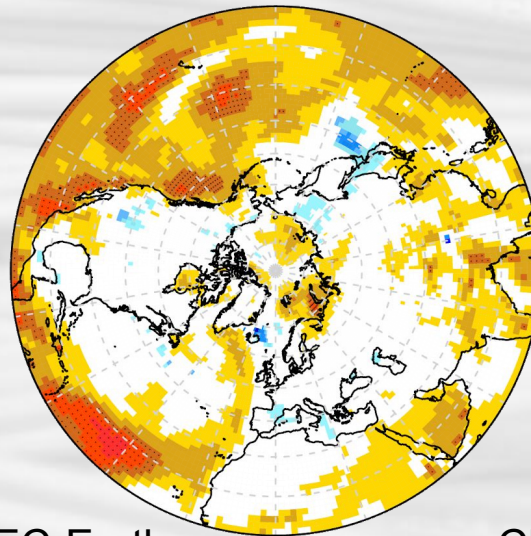
GloSea5



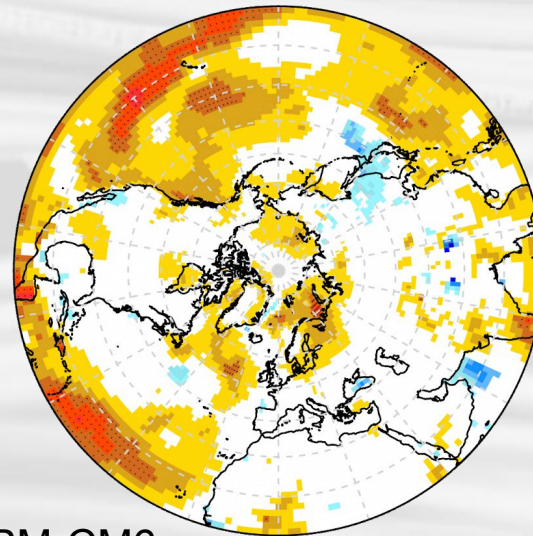
Multi-model



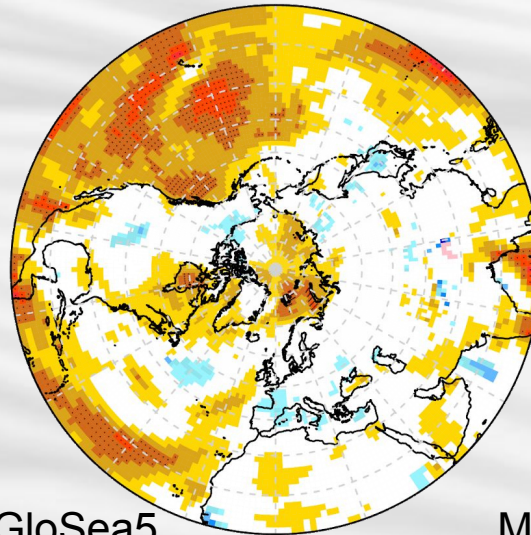
Mean DJF TAS RMSSS (RPC-corrected) Nov forecasts 1993-2014 (vs. ERA-Int)



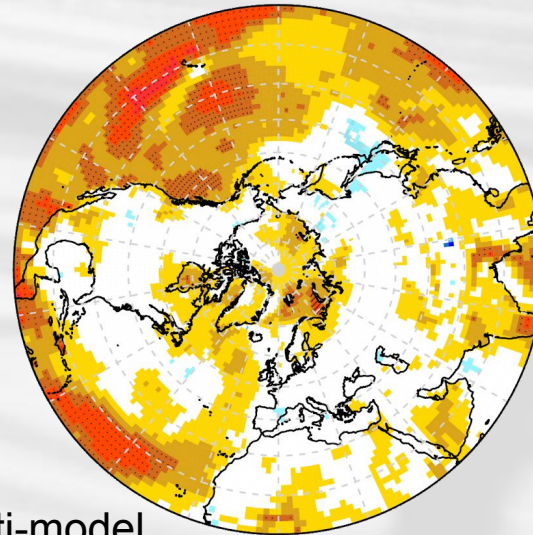
EC-Earth



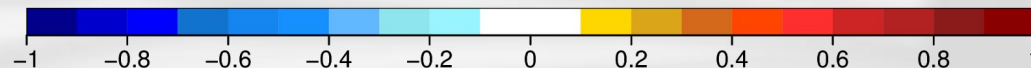
CNRM-CM6



GloSea5

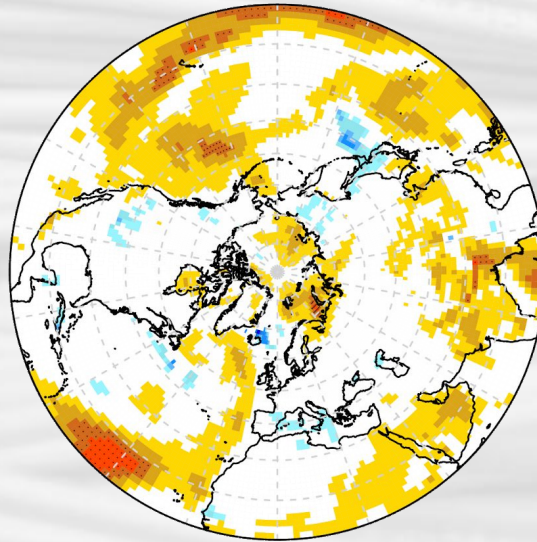


Multi-model

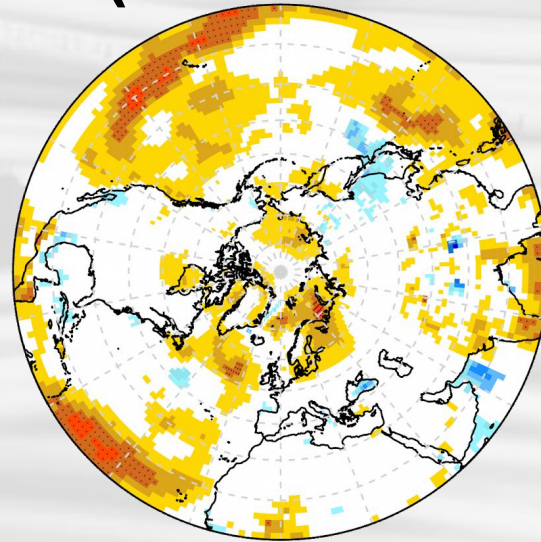


DJF temp. RMSSS without NINO

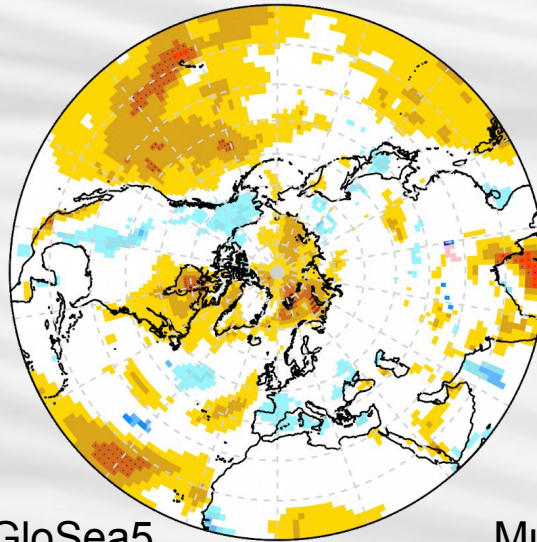
Nov forecasts 1993-2014 (vs. ERA-Int)



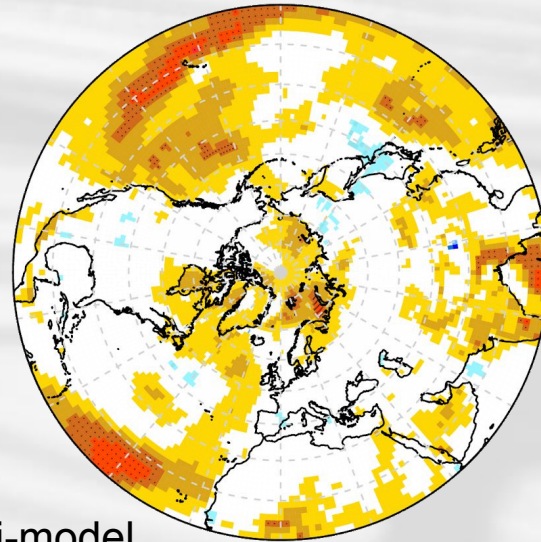
EC-Earth



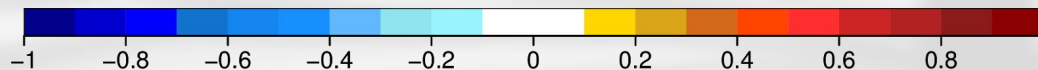
CNRM-CM6



GloSea5

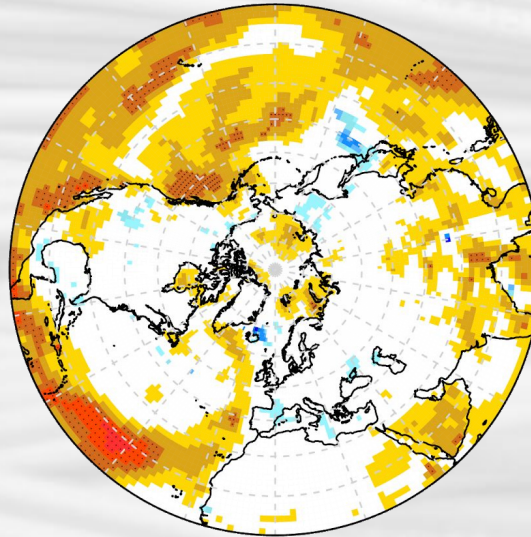


Multi-model

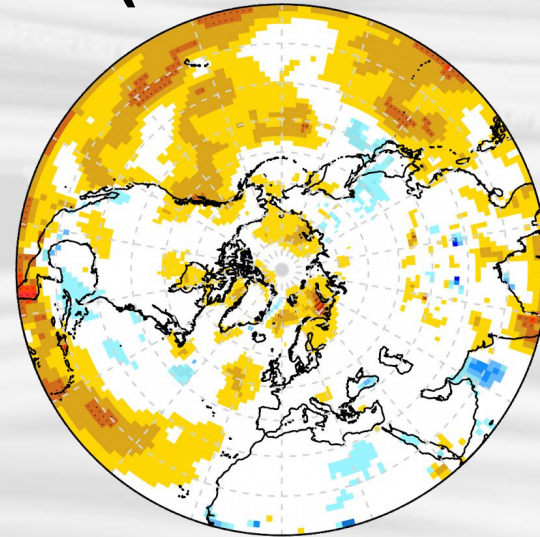


DJF temp. RMSSS without NAO

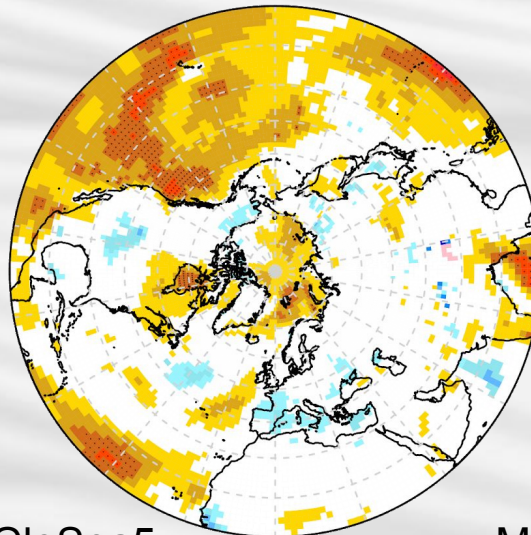
Nov forecasts 1993-2014 (vs. ERA-Int)



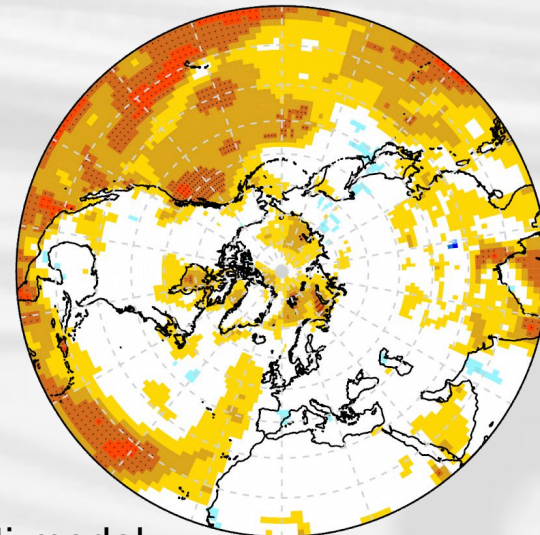
EC-Earth



CNRM-CM6



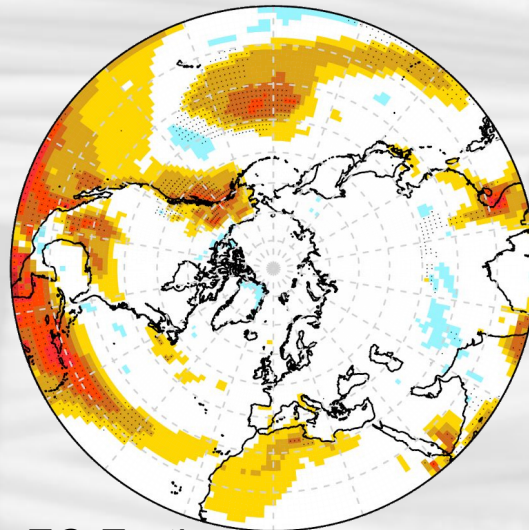
GloSea5



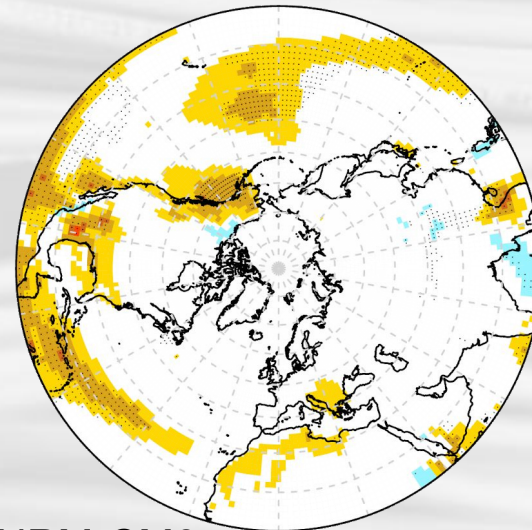
Multi-model



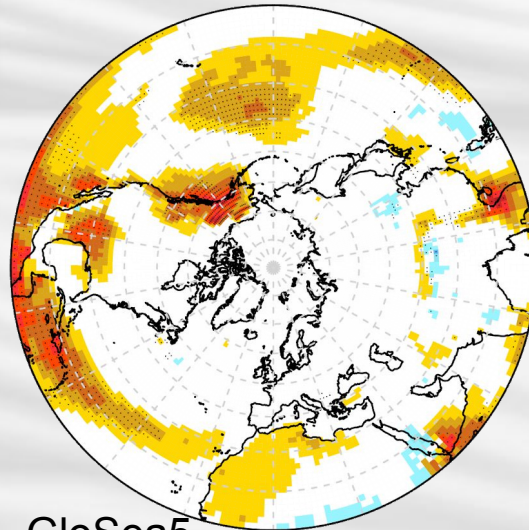
Mean DJF temperature ACC difference in forecasts with and without NINO signal



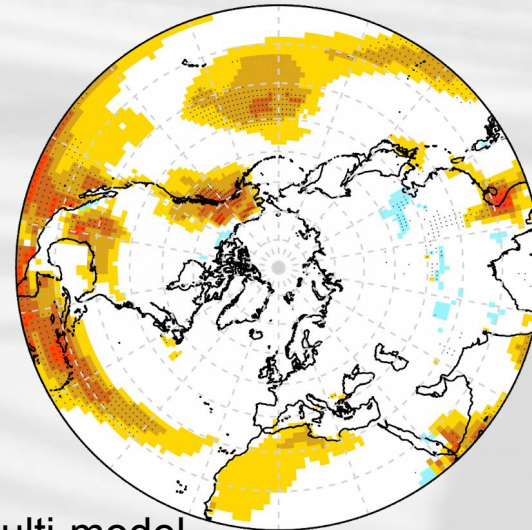
EC-Earth



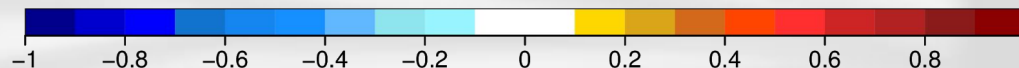
CNRM-CM6



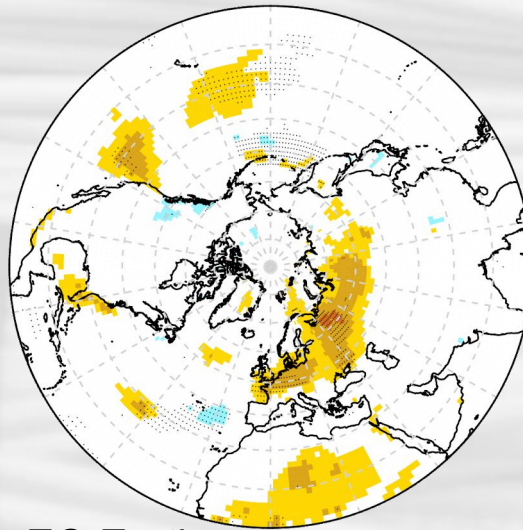
GloSea5



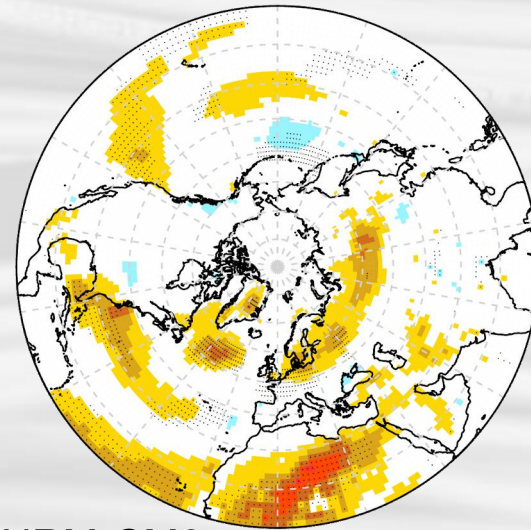
Multi-model



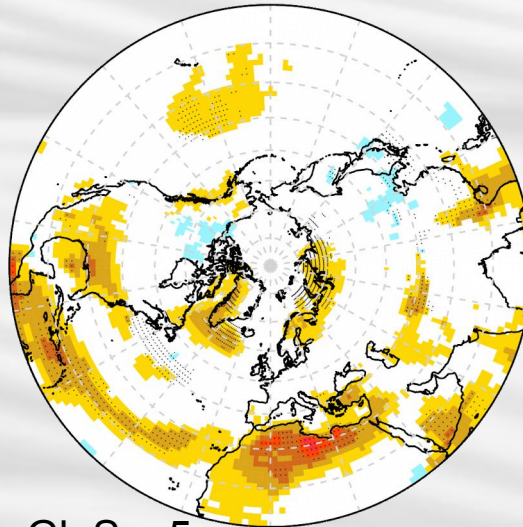
Mean DJF temperature ACC difference in forecasts with and without NAO signal



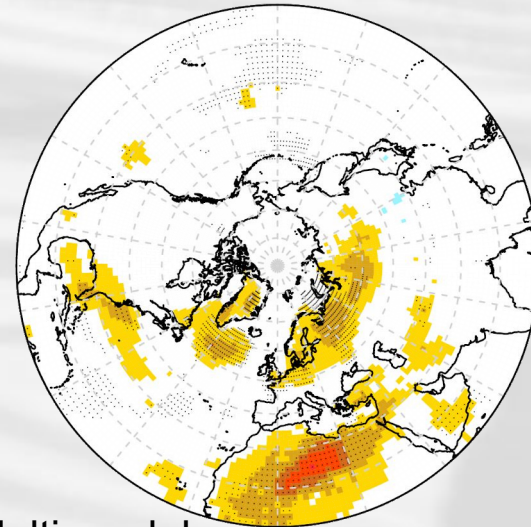
EC-Earth



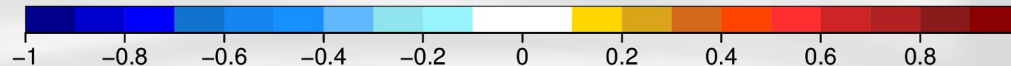
CNRM-CM6



GloSea5

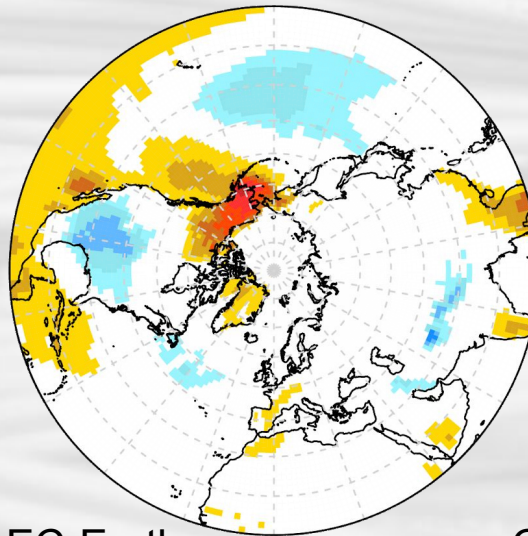


Multi-model

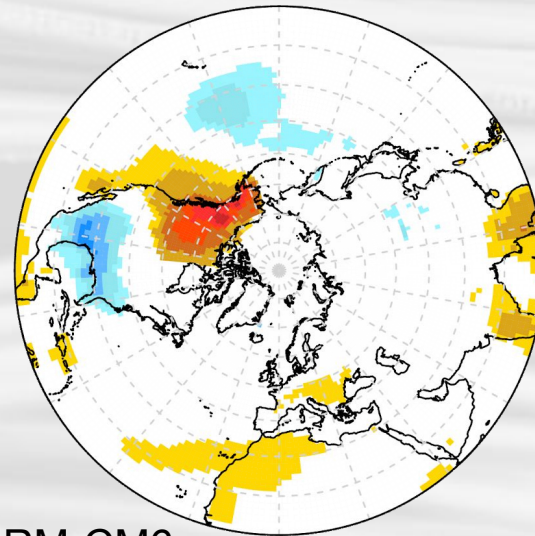


Temperature regressed onto NINO3.4

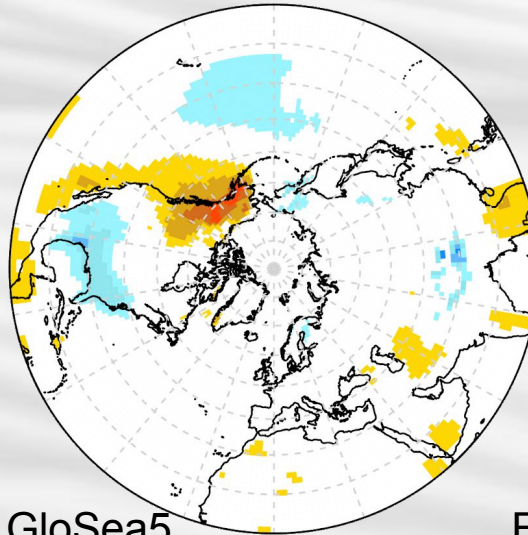
Nov forecasts 1993-2014 (in each system)



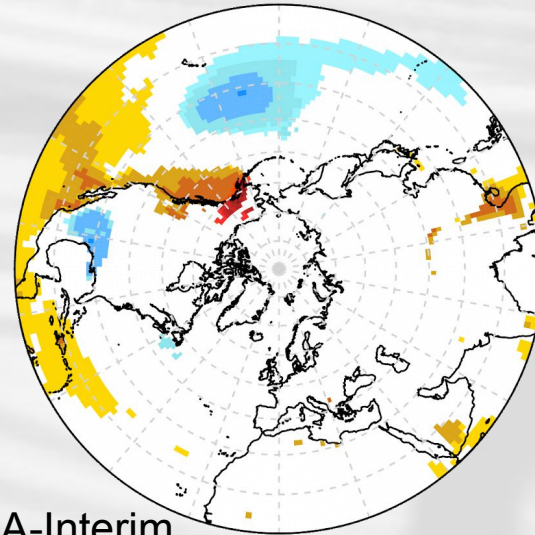
EC-Earth



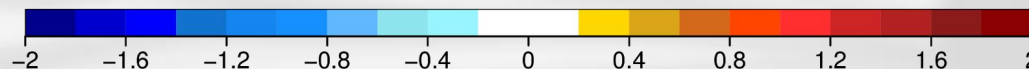
CNRM-CM6



GloSea5

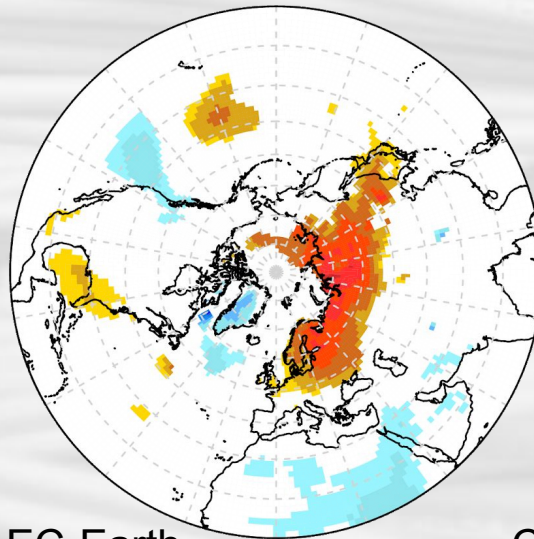


ERA-Interim

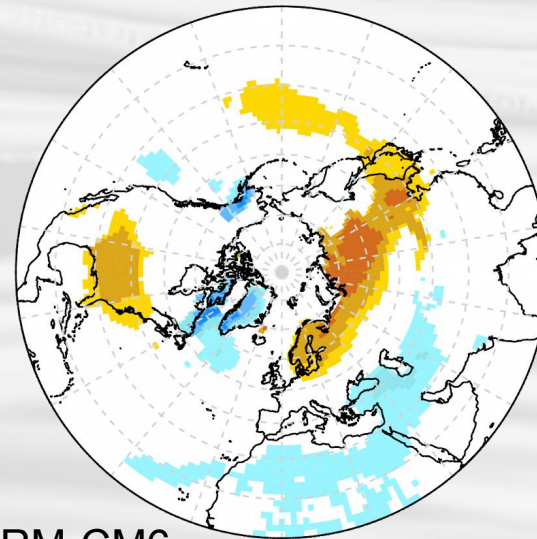


Temperature regressed onto NAOI

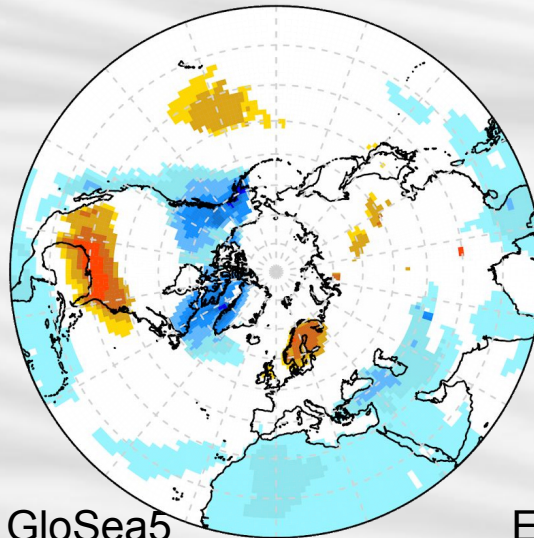
Nov forecasts 1993-2014 (in each system)



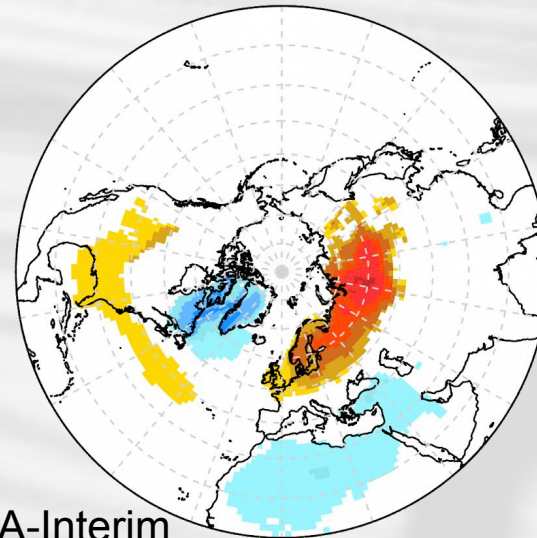
EC-Earth



CNRM-CM6



GloSea5

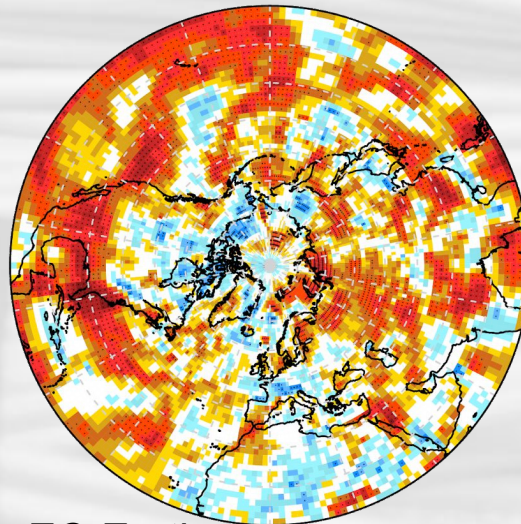


ERA-Interim

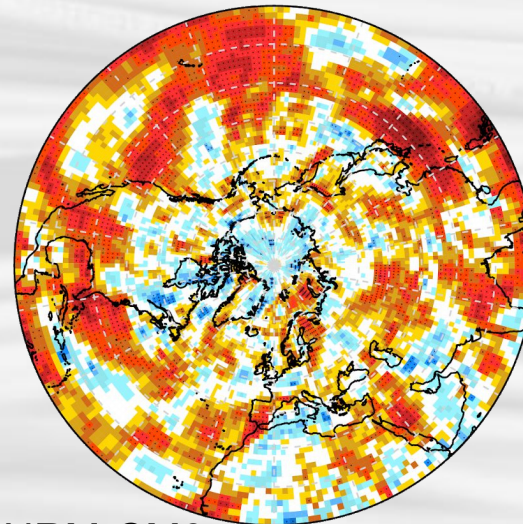


Mean precipitation ACC

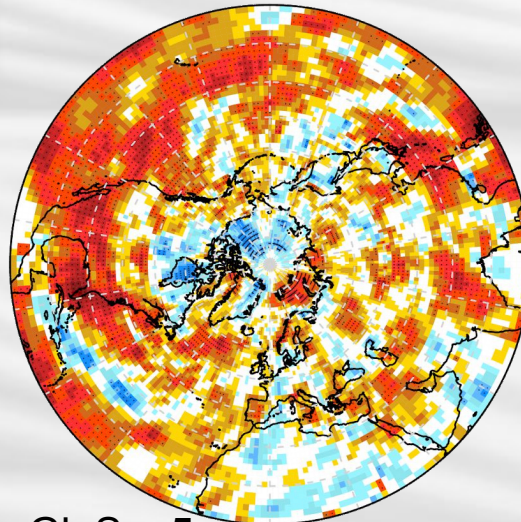
Nov forecasts 1993-2014 (vs. ERA-Int)



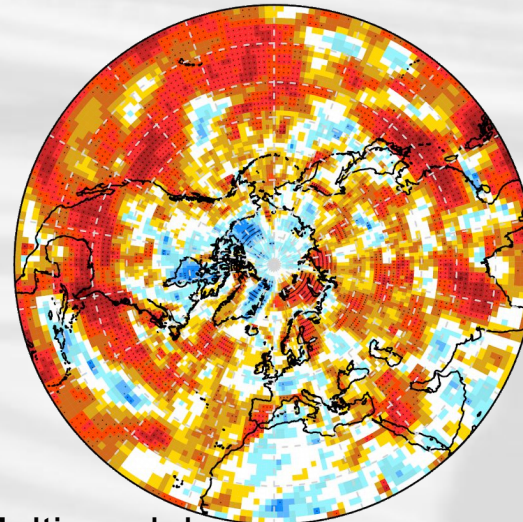
EC-Earth



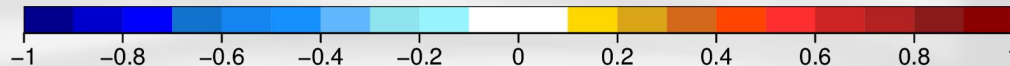
CNRM-CM6



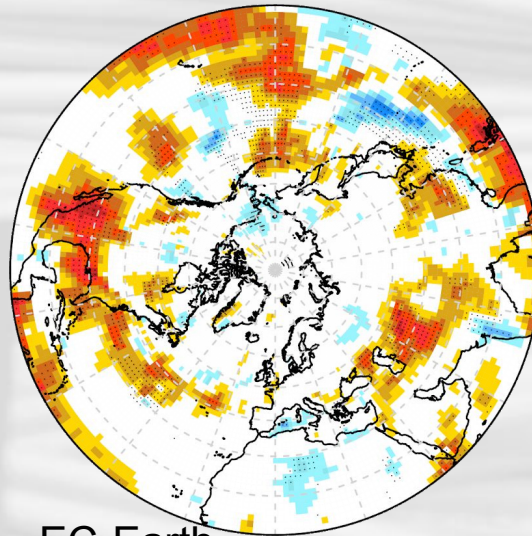
GloSea5



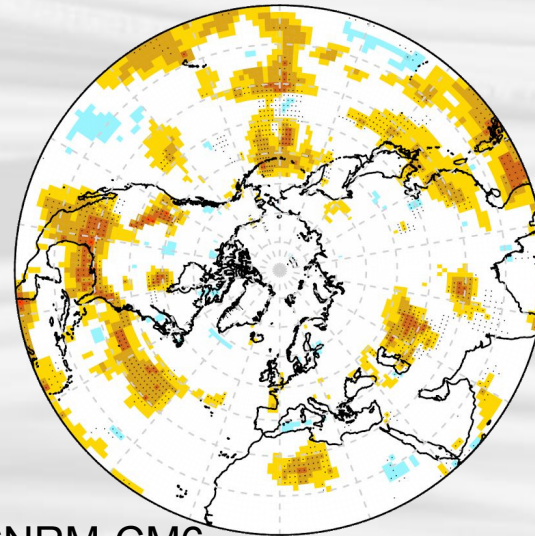
Multi-model



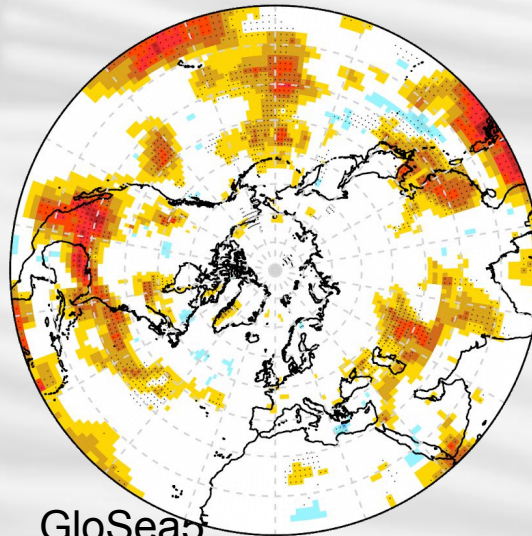
Mean DJF precipitation ACC difference in forecasts with and without NINO signal



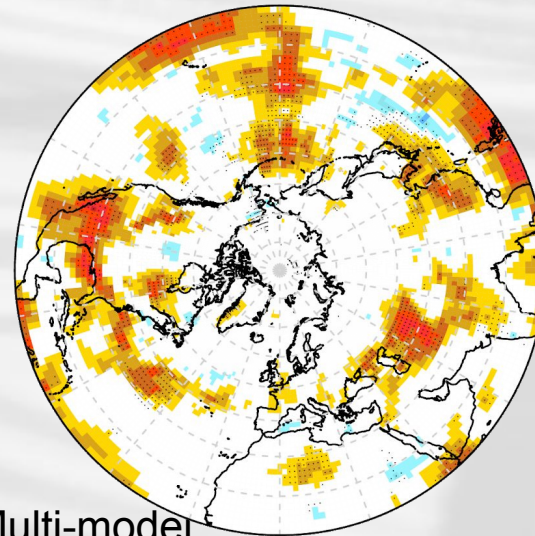
EC-Earth



CNRM-CM6



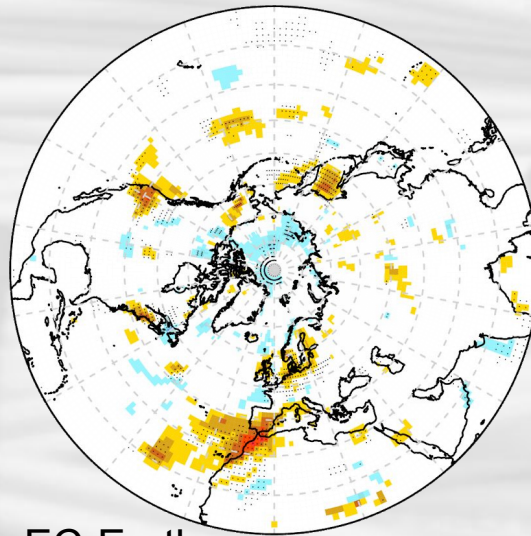
GloSea5



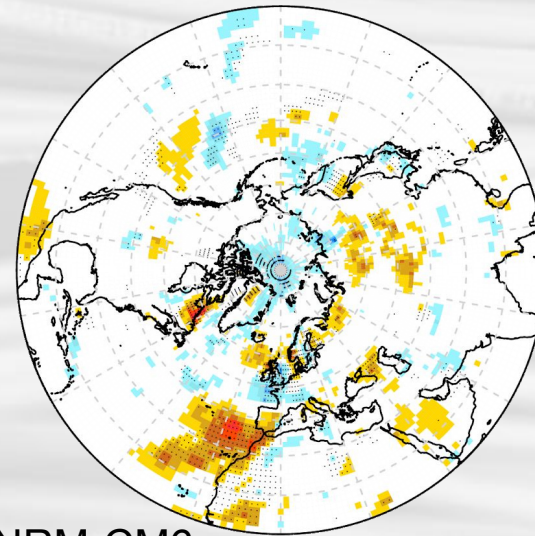
Multi-model



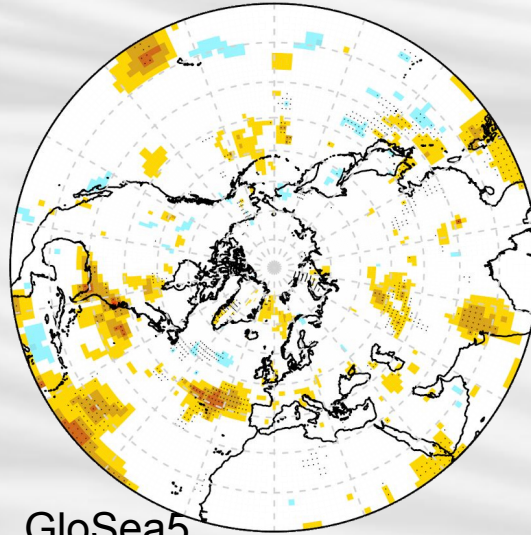
Mean DJF precipitation ACC difference in forecasts with and without NAO signal



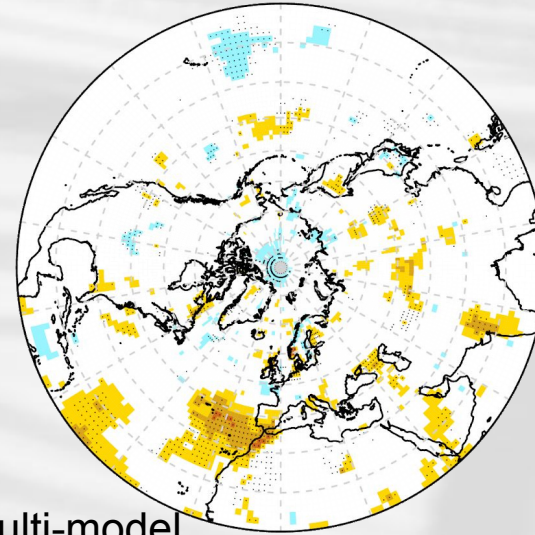
EC-Earth



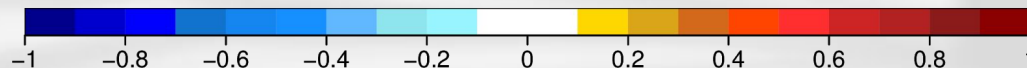
CNRM-CM6



GloSea5

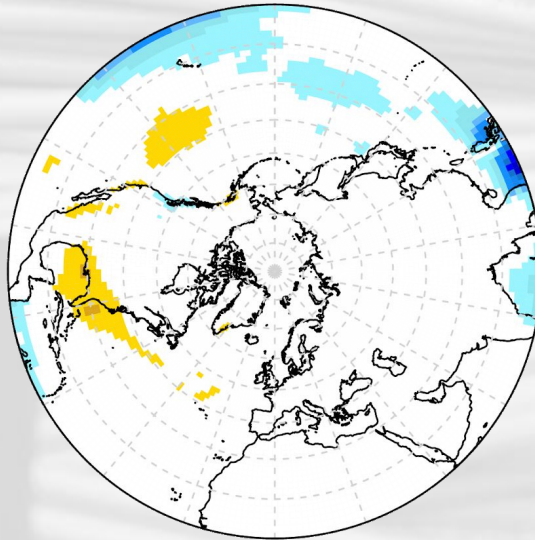


Multi-model

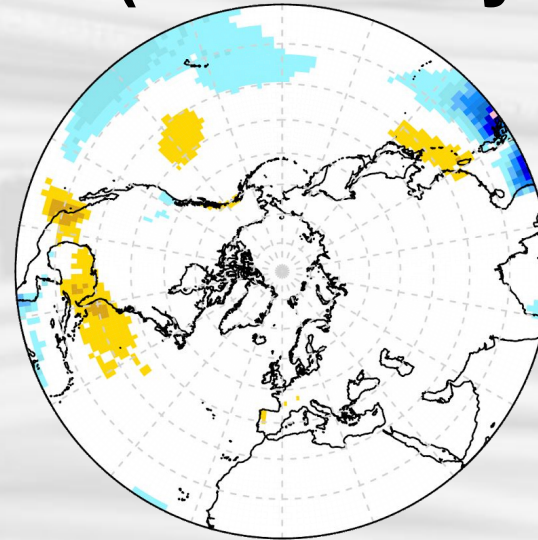


Precipitation regressed onto NINO3.4

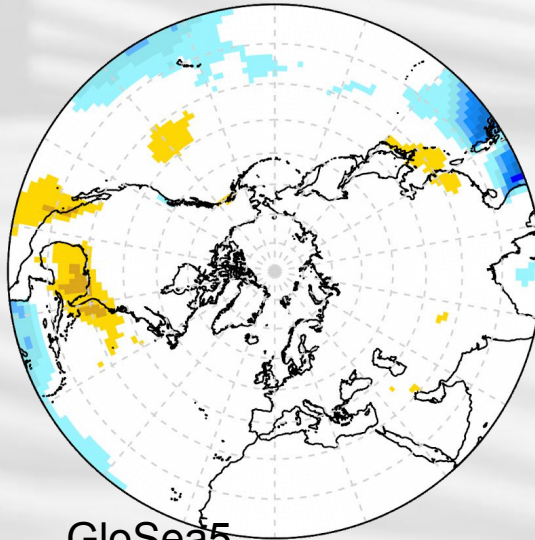
Nov forecasts 1993-2014 (in each system)



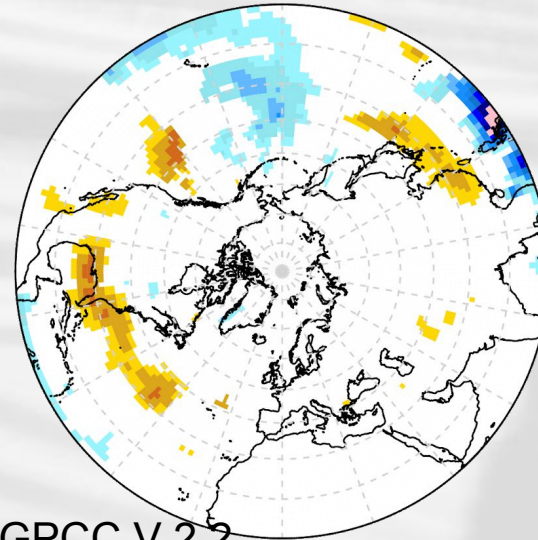
EC-Earth



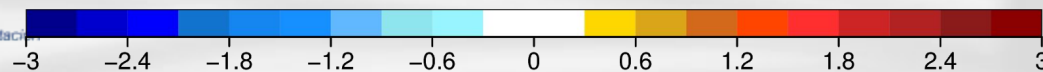
CNRM-CM6



GloSea5

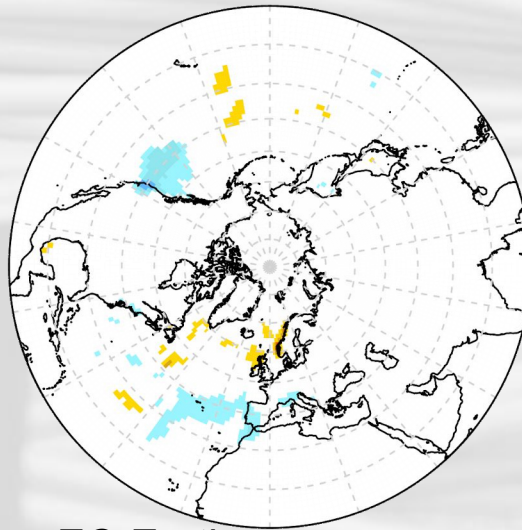


GPCC V.2.2

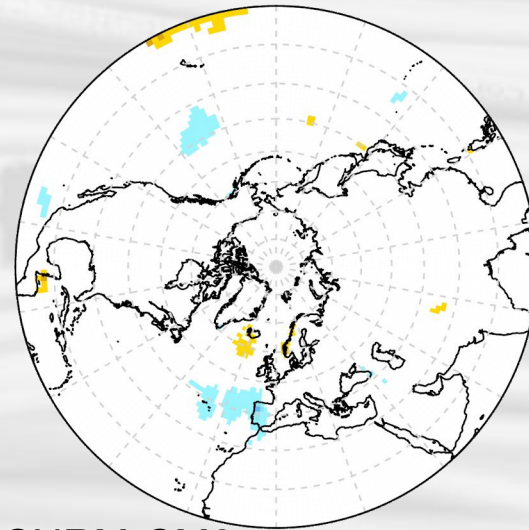


Precipitation regressed onto NAOI

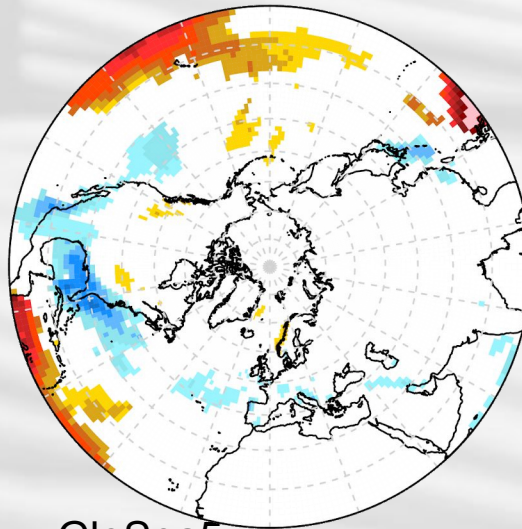
Nov forecasts 1993-2014 (in each system)



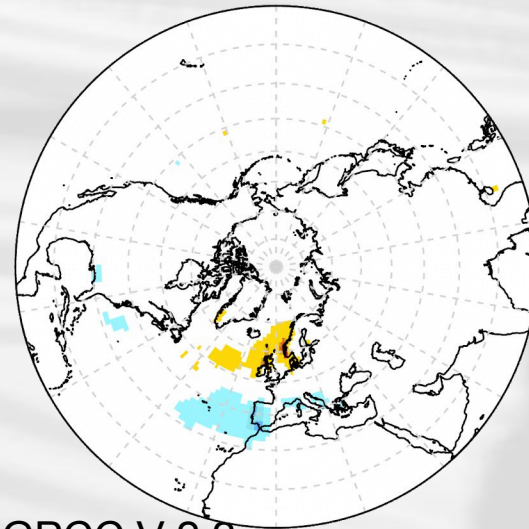
EC-Earth



CNRM-CM6



GloSea5



GPCC V.2.2

